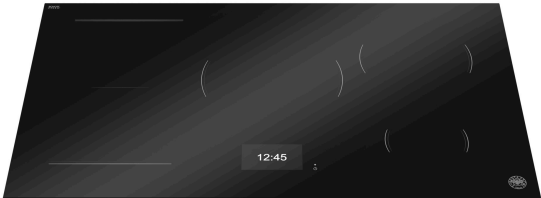


P905I1M37NT

90CM INDUCTION COOKTOP - 5 COOKING ZONES AND
DISPLAY TFT



Safety and Ease of use

The 7" multi-color TFT display offers an advanced and intuitive cooking interface, making it easy to adjust power levels and monitor heat in real time. All main functions are directly accessible on the interface and, thanks to the Automatic Pot Recognition, just a single touch is required to complete all daily actions. The Pot Transfer function allows users to seamlessly move cookware between cooking zones without losing settings.

Distinctive Italian Design

The minimal serigraphies contribute to a clean and refined aesthetic, blending seamlessly into modern kitchen environments. When the cooktop is powered off, the interface remains completely invisible, preserving the minimalist design. When activated, the high-resolution TFT display provides an intuitive and sophisticated user experience.

Bertazzoni Assistant - Smart Cooking Precision

The Bertazzoni Assistant is an intelligent cooking system designed to ensure optimal results by directly controlling the temperature inside cookware. Thanks to advanced sensors placed at the center of each cooking zone, it continuously monitors and adjusts the heat to maintain precision and consistency. This technology allows users to cook with confidence, ensuring perfect outcomes with minimal effort. The 5 programs are: Temperature Holding, Water Boiling, Steaming, Pasta Cooking and Frying.

Unmatched Cooking Performances

Thanks to the most advanced inductors with Half-Bridge technology, Super-Premium cooktops offer exceptional power control, allowing for precise simmering and ultra-fast heating. The maximum power of 3.7kW in boost mode ensures rapid boiling and high-temperature searing, while the ultra-low duty cycle technology allows for stable and consistent low-temperature cooking.

GENERAL CHARACTERISTICS

Control type	TFT
Control position	Front
Power limitation	Yes
Child lock	Yes
Residual heat indicator	Yes
Overflow security	Yes
N° Cooking Zones	5
Bertazzoni Assistant	Yes
Pot moving	Yes
N° Multizone	1 Multizone

COOKING ZONES

Cooking zone size PS [mm]	190x210
Cooking zone size PD [mm]	210
Power of the cooking zone PS [W]	2100 - PB: 3000 - DPB: 3700
Power of the cooking zone PD [W]	2300 - PB: 3000 - DPB: 3700
Cooking zone size AS [mm]	190x210
Cooking zone size AC [mm]	260
Cooking zone size AD [mm]	145
Power of the cooking zone AS [W]	2100 - PB: 3000 - DPB: 3700
Power of the cooking zone AC [W]	2600 - PB: 3200 - DPB: 3700
Power of the cooking zone AD [W]	1400 - PB: 1850 - DPB: 2200

TECHNICAL SPECIFICATIONS

Electrical requirements	220-240 V , 50/60 HZ - 11100 W 48 A
Absorbed current [A]	48 A
Packaging dimensions (mm)	H: 160 W: 1030 D: 663
Weights (kg)	Net: 38.0 kg Gross: 40.0 kg

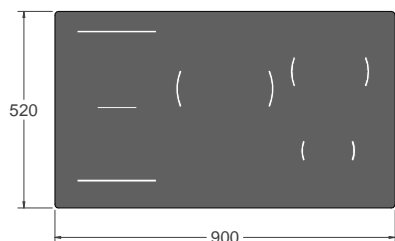
P905I1M37NT

90CM INDUCTION COOKTOP - 5 COOKING ZONES AND
DISPLAY TFT

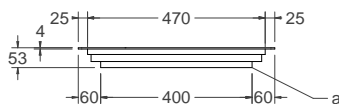


PRODUCT DIMENSION

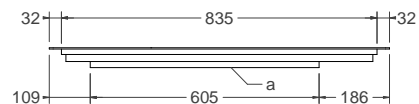
TOP VIEW



SIDE VIEW

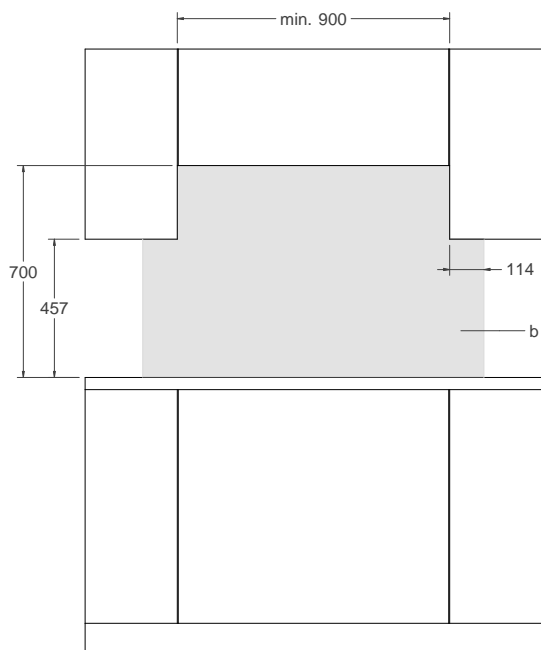


FRONT VIEW

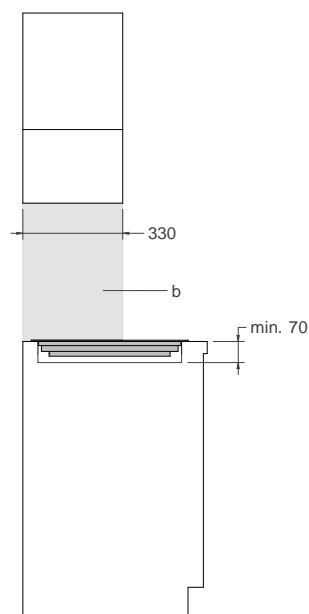


CUTOUT DIMENSIONS

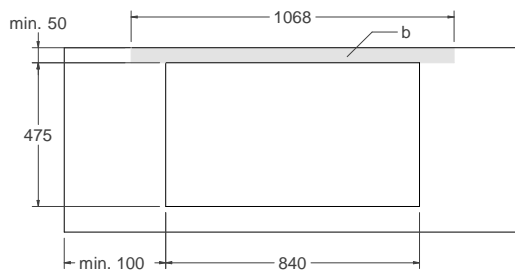
FRONT VIEW



SIDE VIEW



TOP VIEW



NOTE

- a. Electrical connection
- b. High-temperature resistant surface

Disclaimer: while every effort has been made to insure the accuracy of the information contained in this document, Fratelli Bertazzoni reserves the right to change any part of the information at any time without notice. For detailed installation specifications consult the installation manual. Fratelli Bertazzoni, Bertazzoni and the winged wheel brand icon are registered trademarks of Bertazzoni Spa